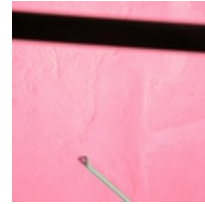


# Natasha Bhatia



At the heart of my work, I draw on my mixed English and Indian heritage for inspiration, placing a strong emphasis on cultural identity and visualizing human emotion.

My work reflects my own mixed ancestry exploring the 'golden' thread that binds my western outlook with my eastern heart.

I see something beautiful in everything that is disregarded, fragmented, weathered and torn.

I observe, engage, document, distil and magnify the minutia of these moments to discover a new visual perspective and to enhance the beauty that is found in unexpected places.

[www.natashabhatia.com](http://www.natashabhatia.com)